



QUALITY BRITISH RIFLES



t2 RIFLES OWNER'S MANUAL

Target Sports Centre Ltd., The Tunnel, Dorset DT6 6BY

sales@t2rifles.co.uk
01297 560049
www.t2rifles.co.uk



t2 RIFLES OWNER'S MANUAL

Target Sports Centre Ltd, The Tunnel, Dorset DT6 6BY

sales@t2rifles.co.uk
01297 560049
www.t2rifles.co.uk

CONGRATULATIONS ON YOUR t2 PURCHASE!

Chambering / barrel	12"	15"	18"	20"
.22 WMR				
9x19mm Parabellum				
.223" Wylde				
.300 AAC Blackout				
6.5mm Creedmoor				
.308" Winchester				

Date of assembly: _____
Target Sports Centre Ltd., The Tunnel, Dorset DT6 6BY

FIXINGS AND SPECIFICATIONS

- Rifle chambering: see above.
- Barrel nut torque: minimum 35ft/lbs and maximum 80 ft/lbs.
- Stock castle torque: between 35 and 39 ft/lbs.
- Muzzle thread: 1/2x28 UNEF.
- Forend accessory attachment: M-LOK fitment accessories at the 3 o'clock, 6 o'clock and 9 o'clock positions.
- Top accessory rail: Picatinny standard.

All t2 rifles come as standard with an anodised or Cerakote polymer-ceramic coating. Cerakote is the industry leader in high-temperature, chemical resistant microfilm coatings, and is perfect for tight tolerance applications.



MANUFACTURING AND SPARE PARTS

We are proud to advise that your upper & lower receivers, barrel, barrel nut, bolt or bolt carrier group, forend and firing pins are all bespoke items made in the United Kingdom, along with many of the smaller parts necessary for assembly and safe operation.

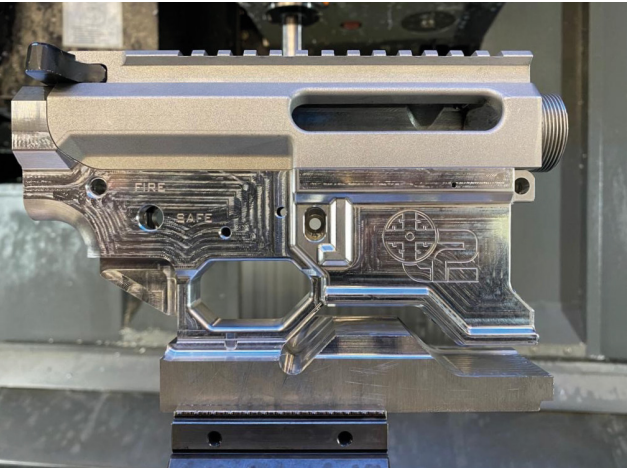
Our processes are tightly quality controlled, and we make sure our manufacturing is to very close tolerances. In addition to Proof, we have test fired your rifle to ensure its operation is just as it should be.

Given the many rounds we expect you to enjoy firing with your t2 rifle, the Target Sports Centre Ltd is able to supply a comprehensive range of spare and replacement parts for your rifle. In fact we offer every part, from springs to barrels, that you may need, subject to firearm certificate authorisation where required.

Please note that whilst we are very happy to supply parts to our valued customers (through a firearms dealer where necessary), we do not supply the trade in general. Our focus is on direct support to our customers.

For parts list and diagrams please see the end of this document, or for all other enquiries, please contact us directly:

www.t2rifles.co.uk/contact



MAINTENANCE AND CLEANING

BREAK IN AND CLEANING

Your t2 rifle barrel is produced in blank form in the UK by Sassen Engineering. Sassen Engineering advise that general break in practice is as follows:

- Shoot one shot, then clean, and repeat five times.
- Shoot three shots and clean, and repeat five times.
- Shoot five shots and clean, repeat five times.
- Once done, clean normally.

We recommend that t2 rifles chambered for .22 rimfire cartridges (both .22LR and .22WMR) should be cleaned after each shooting session and after each 250 rounds. t2 rifles chambered for centrefire cartridges should be cleaned after each shooting session.

DISASSEMBLY / REASSEMBLY OF THE RECEIVER SET

Your receivers have been manufactured to very close tolerances and their takedown pins will be under a small tension to ensure a close fit. For this reason there is likely to be resistance when removing the (forward) pivot pin and (rearward) take down pin. To allow them to be drifted clear of the upper receiver fixing points you should grip the upper and lower receivers in your support hand and squeeze them together. This will be sufficient to allow the two pins to be drifted without the use of tools. The same is required when reassembling the receiver set.

REMOVAL AND REINSTALLATION OF THE BOLT CARRIER GROUP

It is usual to remove the bolt carrier group (BCG) to facilitate cleaning of the barrel and the internal surfaces of the receiver set. In order to do so you must first remove the BCG 'side charge' handle if your t2 rifle is a "straight pull" variant using the supplied Allen key. The takedown pin should then be eased out of engagement with the upper receiver and the receiver set swung open on the pivot pin. The standard charging handle can then be used to move the BCG towards the rear until it can be removed from the upper receiver. If the standard charging handle is also to be removed then the lugs on it must be carefully aligned with the slots in the channel in which it rides.

This will allow it to 'drop' into the space usually occupied by the BCG and from which it can then be removed.

STANDARD AND NON-STANDARD PARTS

Whilst we cannot guarantee the fit of after market accessories or replacement parts, the following parts should be interchangeable if they have been manufactured for the standard AR15 rifle:

- Buffer tube and spring.
- Stock.
- Trigger, springs and assembly.
- Grip.
- Safety selector, detent and spring.
- Magazine catch, button and spring.
- Bolt catch, plunger and spring.
- Charging handle (NOT the BCG-mounted charging handle for "straight pull" variants).
- Pivot and Take Down pins, plus remaining lower parts including détente pins and springs, buffer retainer pin and spring.
- Muzzle brake or moderator with 1/2x28 thread, pending clearance from the chosen handguard.

The lower receiver on your rifle is designed to accept standard STANAG magazines and magazines made for rimfire rifles by Black Dog Machine. t2 will shortly produce a bespoke magazine for your rifle.

However, for .22 rimfire variants the bolt and buffer have been carefully designed in tandem to provide the correct reciprocating length and weight of the components to operate the blowback action successfully. For this reason your .22 rimfire rifle will not operate with any other buffer than the one provided. You should not attempt to modify this assembly.

The t2 forend has been designed with the upper and lower receiver to ensure a flush fit and consistency of material and design, therefore we do not recommend installing a forend from a third party provider.



t2 PARTS LIST

LOWER RECEIVER

10001 (2) Lower receiver

LOWER PARTS KIT

11001 Trigger
11002 Trigger return spring
11003 Trigger pin
11004 Hammer
11005 Hammer return spring
11006 Hammer pin
11007 Disconnecter
11008 Disconnecter spring
11009 Safety selector
11010 Safety selector detent
11011 Safety selector detent spring
11012 Pivot pin
11013 Pivot pin detent
11014 Pivot pin detent spring
11015 Takedown pin
11016 Takedown pin detent
11017 Takedown pin detent spring
11018 Bolt catch
11019 Bolt catch spring
11020 Bolt catch plunger
11021 Bolt catch roll in
11022 Magazine catch
11023 Magazine release button
11024 Magazine release spring

12001 Pistol grip
12002 Pistol grip screw
12003 Pistol grip screw washer

13001 Buffer tube
13002 Buffer spring
13003 Buffer (centrefire variant)
13004 Buffer (.22WMR variant)
13005 Buffer retainer
13006 Buffer retainer spring
13007 Stock
13008 Buffer tube castle nut
13009 End plate

UPPER RECEIVER

20001 Upper receiver
(straight pull variant)
20002 (1) Upper receiver
(semi-auto variant)

RIMFIRE BOLT ASSEMBLY

30001 (4) Rimfire bolt
30002 (5) Rimfire firing pin
30003 (6) Rimfire firing pin spring
30004 (7) Rimfire firing pin retaining pin
30005 (8) Rimfire extractor
30006 (11) Rimfire extractor spring
30007 (10) Rimfire extractor stay
30008 (12) Rimfire bolt key
30009 (13) Rimfire bolt key screw

CENTREFIRE BCG

40001 Centrefire bolt carrier
40002 Centrefire firing pin
40003 Centrefire firing pin retaining pin
40004 Centrefire ejector
40005 Centrefire ejector spring
40006 Centrefire ejector pin
40007 Centrefire extractor
40008 Centrefire extractor spring
40009 Centrefire extractor pin
40010 Centrefire bolt carrier key
40011 Centrefire bolt carrier key screw
(x2)
40012 Centrefire bolt
40013 Centrefire bolt (9mm variant)
40014 Centrefire bolt cam pin
41001 Charge handle
41002 Charge handle extension
41003 Charge handle screw
41004 Charge handle extension screw

HANDGUARDS

60001 (3) Handguard (10" variant)
60002 Handguard (13" variant)
60003 Handguard (15" variant)

61001 Handguard locating pin

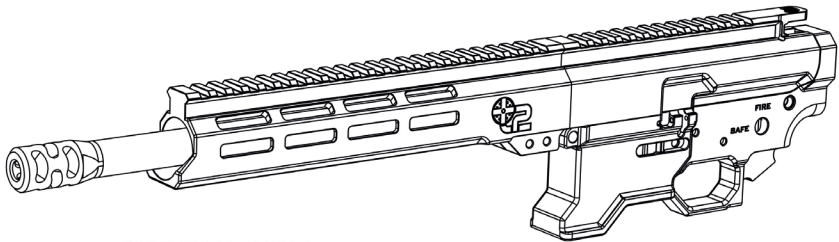
BARREL AND ASSEMBLY

50001 Barrel (.22WMR, 12")
50002 Barrel (.22WMR, 14")
50003 Barrel (.223", 18")
50004 Barrel (.223", 20")
50005 Barrel (.300, 12")
50006 Barrel (9mm, 12")
50007 Barrel (9mm, 15")

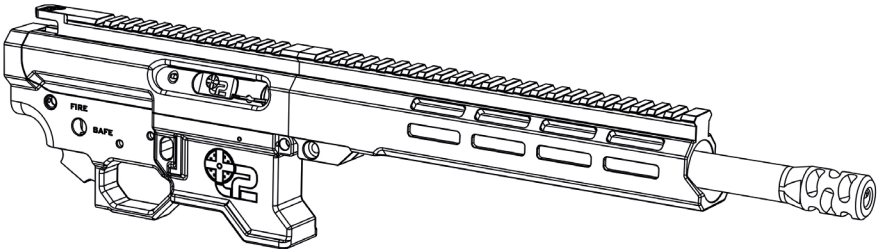
51001 (14) Barrel nut
52001 (9) Rimfire ejector
53001 (16) Muzzle brake



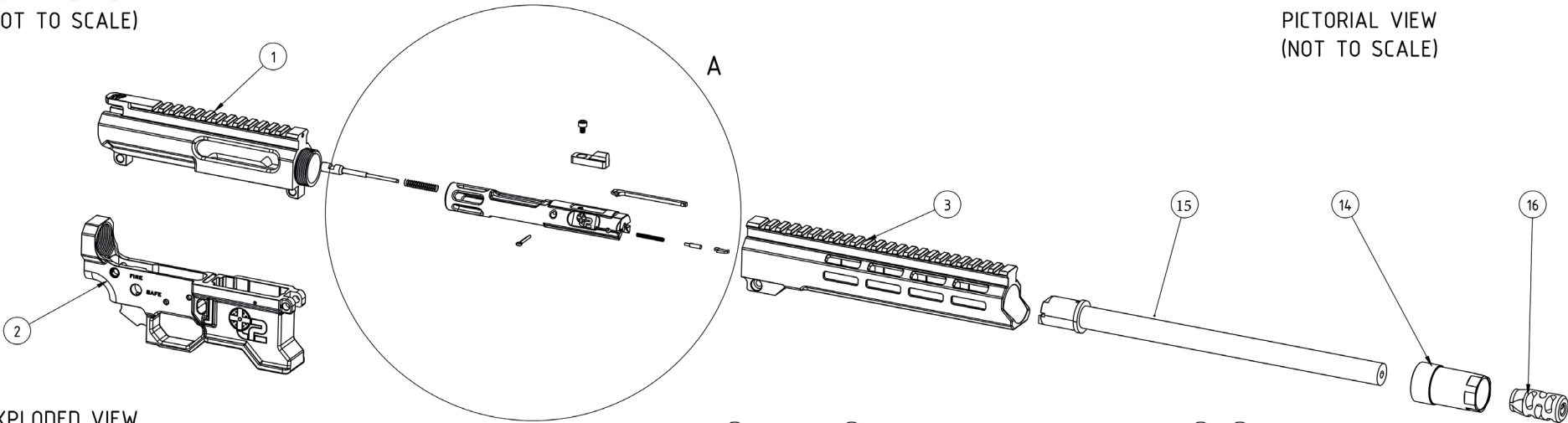
t2 PARTS DIAGRAM (Rimfire variant shown)



PICTORIAL VIEW
(NOT TO SCALE)

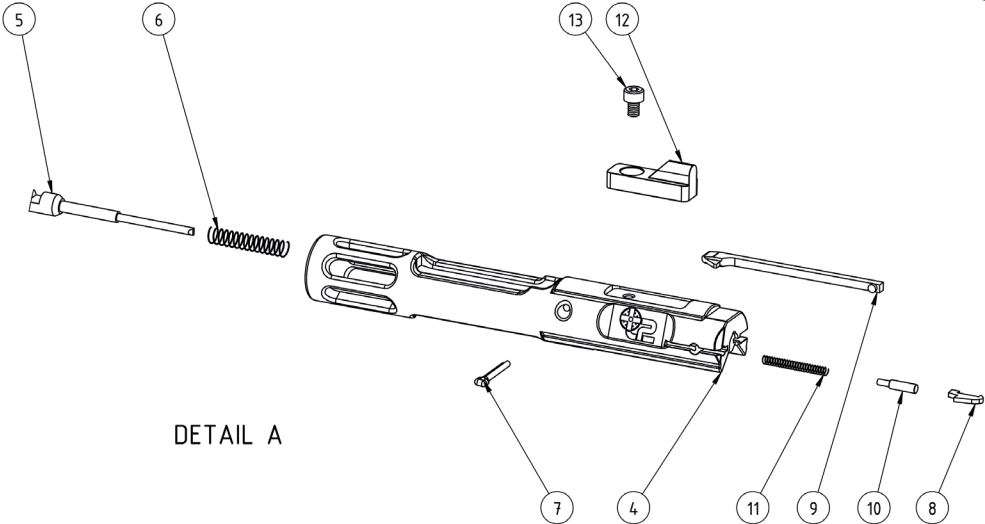


PICTORIAL VIEW
(NOT TO SCALE)



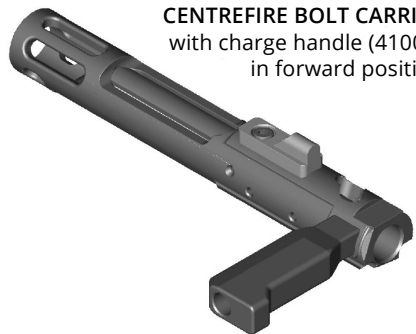
EXPLODED VIEW
(NOT TO SCALE)

ITEM NO.	PART NUMBER	DESCRIPTION	QTY.
1	01-0200	RECEIVER, UPPER , BASIC, T2-AR15. .	1
2	01-0201	RECEIVER, LOWER , BASIC, T2-AR15. .	1
3	01-0211	HANDGUARD, 10 INCH, STEPPED, T2-AR15	1
4	01-0220	BOLT CARRIER, AR15 - T2, 22 WMR	1
5	01-0221	FIRING PIN, T2_ AR15, WMR22	1
6	01-0222	COIL SPRING, FIRING PIN, T2-AR15, 22 WMR (0.25 WIRE, 6 O/D, 30MM LENGTH)	1
7	01-0223	RETAINING PIN, FIRING PIN, T2-AR15, 22 WMR	1
8	01-0224	EXTRACTOR PLATE, T2-AR15, 22 WMR	1
9	01-0226	FACE EJECTOR, T2-AR15, 22 WMR	1
10	01-0227	SPRING PLUNGER, EXTRACTOR, T2-AR15, 22 WMR	1
11	01-0228	COIL SPRING, EXTRACTOR, T2-AR15, 22 WMR (0.1 WIRE, 3 O/D, 25MM LENGTH)	1
12	01-0229	GAS KEY, T2-AR15, 22 WMR	1
13	01-0230	FIXING SCREW_ GAS KEY, (M4 0.7P) X 6mm - T2-AR15, 22 WMR	1
14	01-0240	BARREL NUT, T2-AR15. .	1
15	01-0245	BARREL (556), T2-AR15, 22 WMR	1
16	01-0246	MUZZLE BRAKE, TYPE 4,, T2-AR15	1

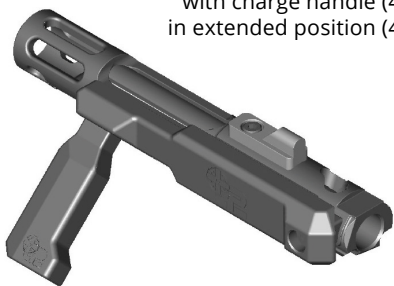


DETAIL A

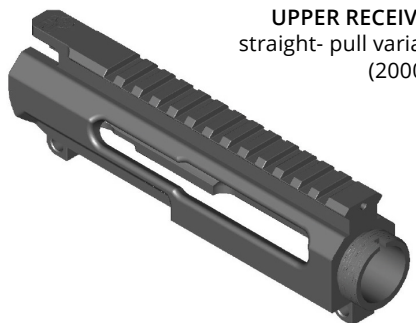
CENTREFIRE BOLT CARRIER
with charge handle (41001)
in forward position



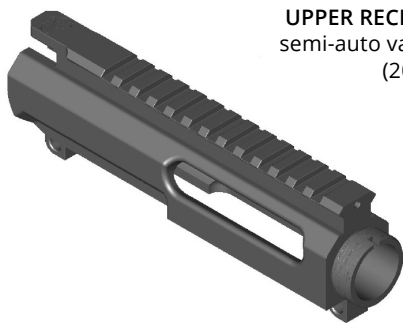
CENTREFIRE BOLT CARRIER
with charge handle (41001)
in extended position (41002)



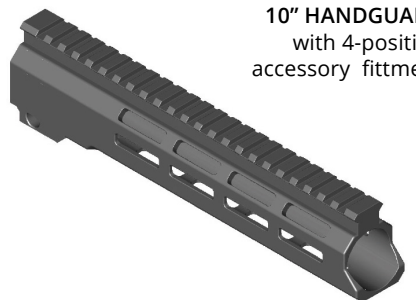
UPPER RECEIVER
straight- pull variant
(20001)



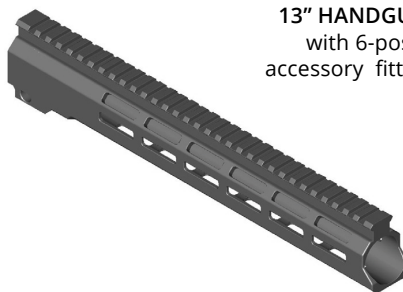
UPPER RECEIVER
semi-auto variant
(20002)



10" HANDGUARD
with 4-position
accessory fittment



13" HANDGUARD
with 6-position
accessory fittment



15" HANDGUARD
with 7-position
accessory fittment

